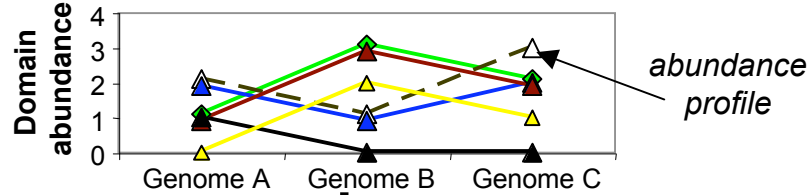
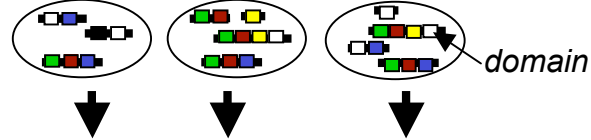


Repertoire of protein families in each genome

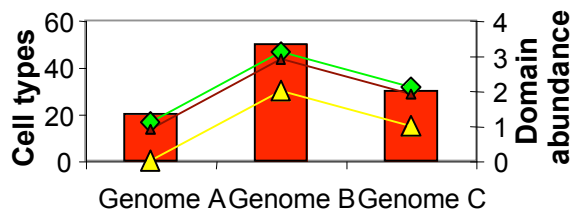
Genome A Genome B Genome C



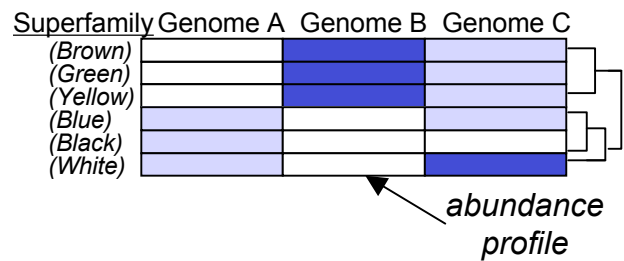
Normalisation

Correlation

.... with number of different cell types

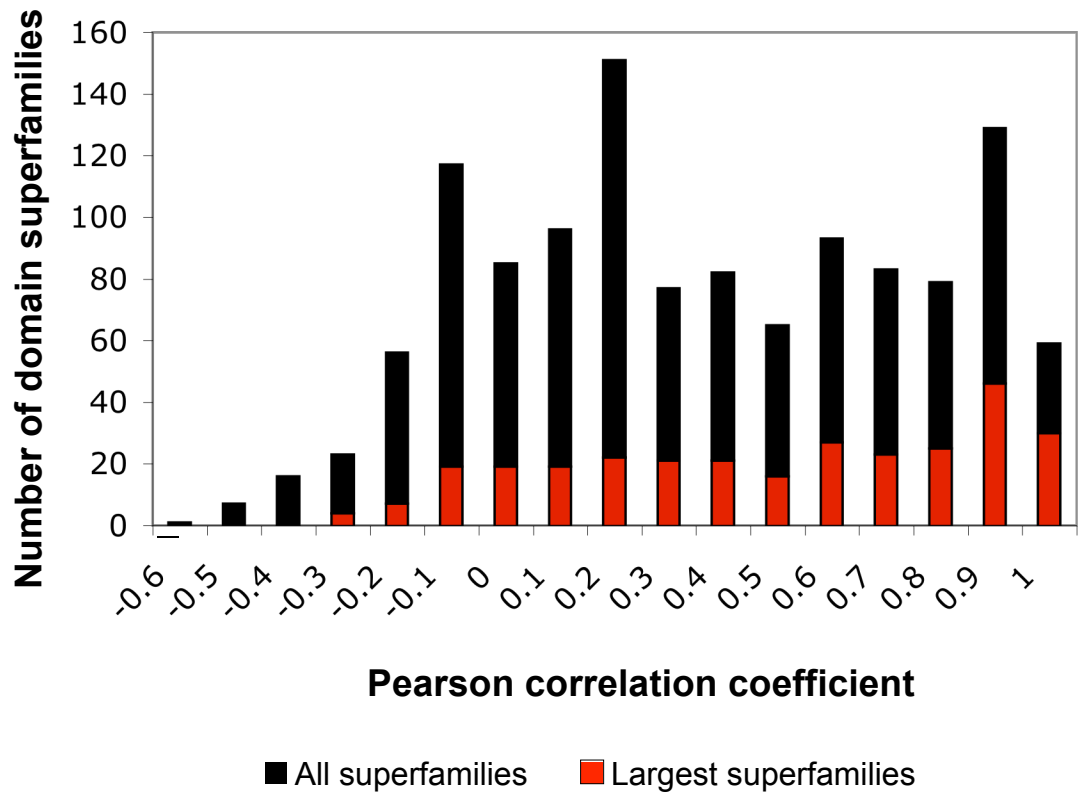


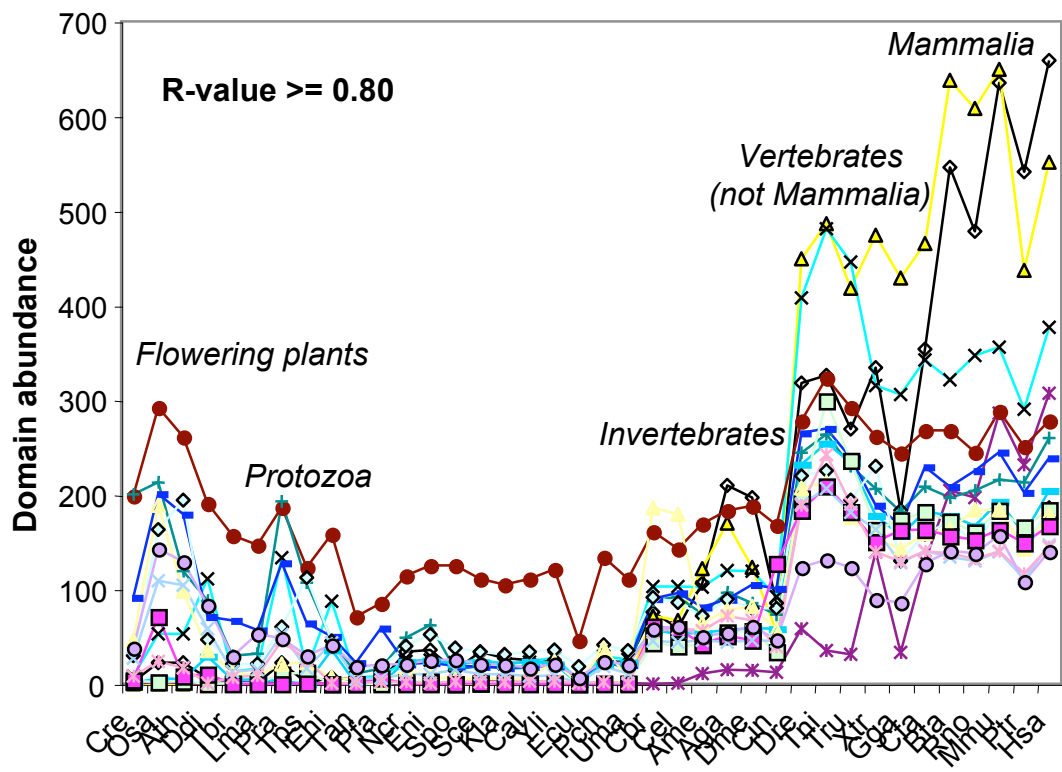
... with each other



Analysis of function

Linking molecular and macroscopic characteristics through inference





- ◇ C2H2 and C2HC zinc fingers
- ▲ Immunoglobulin
- × PH domain-like
- * Multiheme cytochromes
- WD40 repeat-like
- + Ankyrin repeat
- EF-hand
- SH3-domain
- ◇ Winged helix
- Fibronectin type III
- ▲ POZ domain
- EGF/Laminin
- × C2 domain (Calcium/lipid-binding domain, CaLB)
- * PDZ domain-like
- Ubiquitin-like

